



2023

BROCHURE





WHAT WE FISH FOR

Home to Kulik Lodge, the Bristol Bay watershed is regarded as one of the most productive fisheries for native Rainbow Trout in the world.

We're really fortunate to be located on the banks of the Kulik River, one of the region's most popular trout destinations, giving our guests access to world-class trout fishing with virtually no travel time or weather restrictions.

We certainly don't limit our troutfishing to our home waters, however. Guided fly outs through our own Katmai Air flight service allows our guests to target rainbows across Bristol Bay, within a 100-mile radius from our lodge. That allows us to target trout using a bunch of exciting methods depending on our angler's interests.

In addition to Rainbow Trout, we also have other other resident species including Arctic Grayling, Lake Trout, Arctic Char, Dolly Varden and Northern Pike around the lodge and throughout the region.

The fly out option also allows us to fish for five species of Pacific Salmon that include King Salmon, Chum Salmon, Sockeye Salmon and Silver Salmon. All fishing for resident species is catch and release, however fresh salmon can be retained and will be professionally prepped to take home.





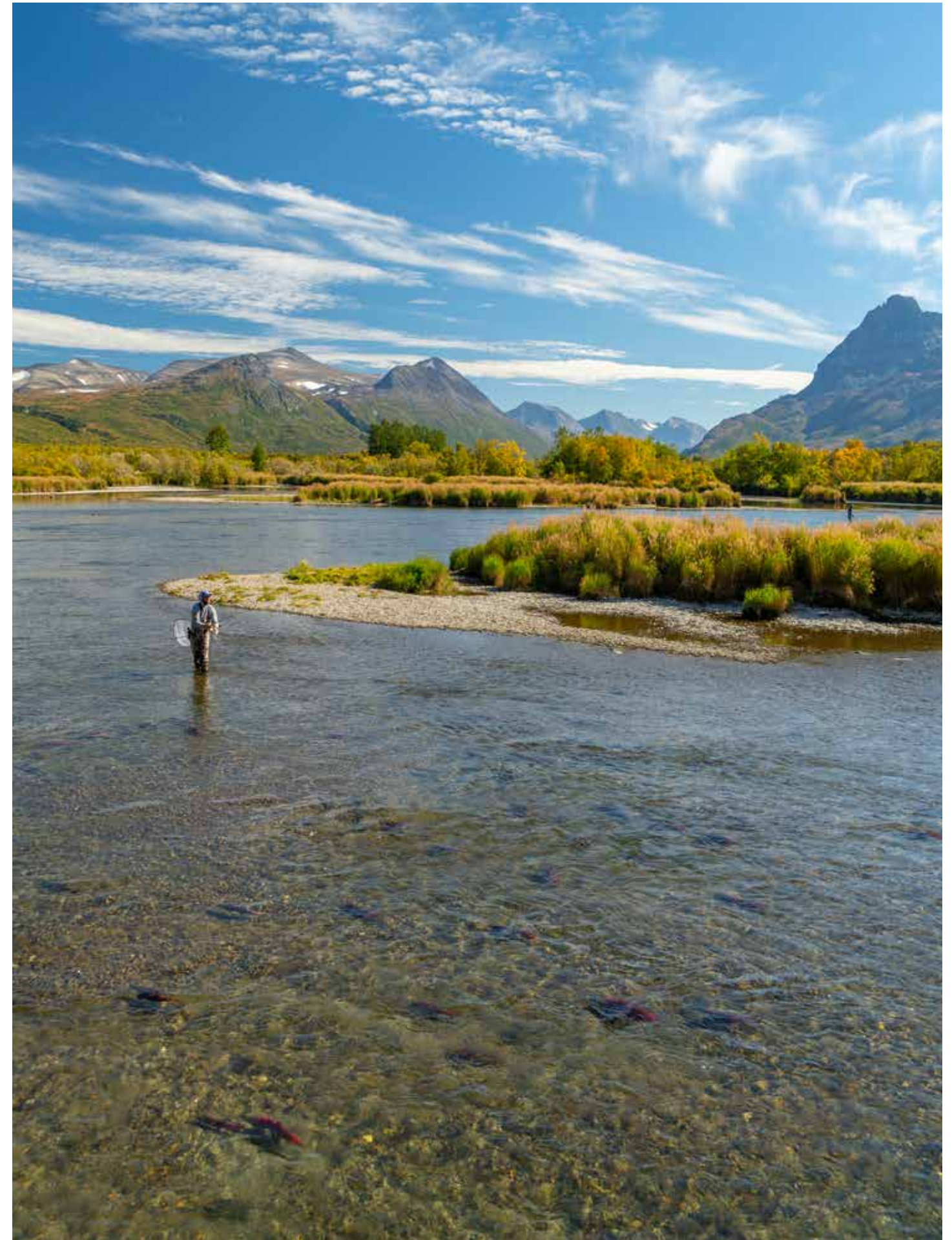
WHERE WE FISH

Imagine there are no other fishing lodges in Alaska. Now, picture yourself flying over the heart of Katmai National Park and the greater Bristol Bay watershed looking for just the right place to start a fishing lodge, the only fishing lodge in Alaska.

What would you look for? A spot with epic fishing on-site? Of course. What about a central location with easy access to all the other incredible fisheries in the area? Definitely. As the first fly out fishing lodge in Alaska, that's exactly how the site for Kulik Lodge was chosen many years ago.

Nestled between the eastern shore of Nonvianuk Lake and the mouth of the Kulik River, Kulik lodge is centrally located between numerous legendary rivers, streams, and lakes across Bristol Bay (and beyond), the majority of which are within a short twenty minute float plane flight from our lodge.

- Our fleet of float planes operated by our own Katmai Air flight service allows us to fish many of the most fabled waters of the region (along with a few close-kept secrets) within a 100 mile radius of our lodge, including the following: Kulik River, Nonvianuk Lake and Kulik Lake, Nushagak River, Kvichak River, Alagnak River, Kamishak River, Brooks River, American Creek, and other legendary Bristol Bay Creeks.





THE LODGE

Established in 1950 as part of the original Angler's Paradise family of lodges, Kulik Lodge was founded by Alaska aviation pioneer, Ray Petersen, as the first fly out fishing lodge in Alaska.

From its humble beginnings as a rustic tent camp, Kulik Lodge has since developed into a full-service sport fishing lodge with all modern amenities. Incredible fishing for native rainbow trout exists right outside our front door on the world-renowned Kulik River, and our centralized location allows us to fish some of the finest rivers and streams in Bristol Bay (and beyond) within a 100 mile radius.

The historic main lodge building, built of native spruce, boasts a large stone fireplace and bar where our guests enjoy complimentary cocktails, reflect on the day's adventures, and/or tie flies in preparation for the days to come.





Also located in the main lodge building is the dining area where guests and staff alike gather to dine ‘family style’ on hearty meals prepared by our professional chef and kitchen staff.

The lodge environment is casual. What should you wear to dinner? How about whatever you’d wear at home. After all, we consider you part of the family while at Kulik, and when we tell you to make yourself at home, we mean it.



Contact us at Bristol Adventures 1-907-243-5448





Although our proximity to many of Southwest Alaska's most prolific rivers and streams draw most of our guests to Kulik, it's our staff of professional guides, experienced pilots, and personable lodge staff that brings them back year to year.

We're extremely fortunate to have a high rate of return guests at Kulik Lodge, many of which are made up of multiple generations of family and friends. We think that says a lot about our Kulik family, and we want you to be a part of it.

GUEST ACCOMMODATIONS

Guests are housed in comfortable cabins during their stay, each of which include modern amenities such as electricity, shower, and private toilet facilities.

We're able to accommodate up to twenty seven guests at a time across our eleven guest cabins with varying layouts of 1-2 bedrooms and 2-4 beds (depending on the cabin).

Despite our location in the midst of the Katmai wilderness, some of the creature comforts available (almost) make our guests forget how remote they really are. One of those such comforts is our sauna and outdoor hot tub where guests routinely rejoice about their day on the water while taking in the spectacular view across Nonvianuk Lake.

For those looking to get away, but still stay connected during their trip, WiFi is also available for guest use at the lodge.



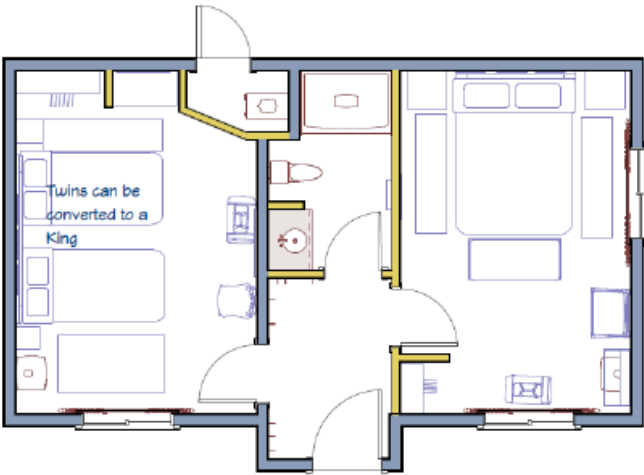
Contact us at Bristol Adventures 1-907-243-5448

CABIN DETAILS

Cabin assignments are based on the group compisition and availability. We will try to honor requests, with return- ing guests getting first priority.

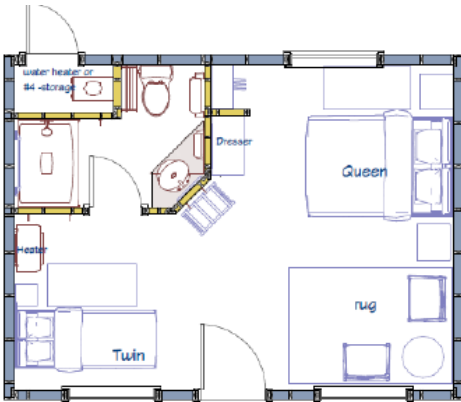
Cabins # 1, 2, & 3

Designed for families, two couples or groups of three anglers. These are what we refer to as our two bedroom (2BR) cabins. They consist of two separate bedrooms and a shared bathroom. One of the bedrooms features a queen-sized bed, and the other features a king-sized bed that can be converted into two twin beds if needed.



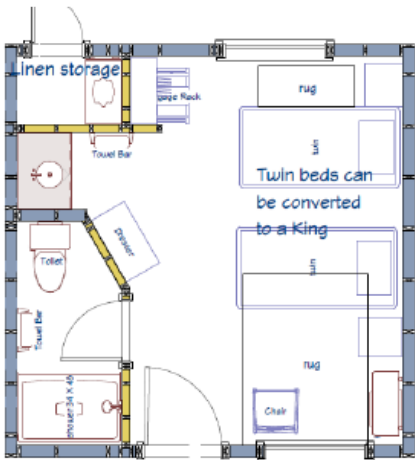
Cabins # 4, 5, & 6

These cabins consist of two separate beds (a queen sized bed and a twin sized bed). Great option for non- couples sharing a room.



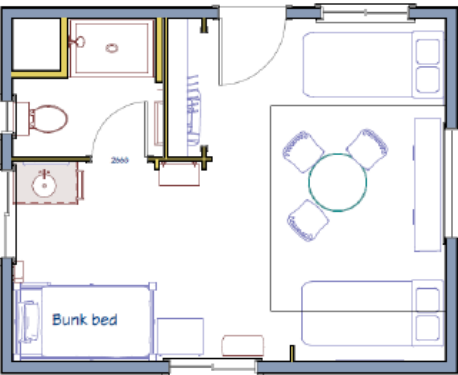
Cabins # 7 & 8

These cabins are ideal for couples. They feature a king sized bed (for couples who would like to share a bed) that can be converted into two twin beds for folks not sharing a bed.



Cabins # 9

We commonly refer to this cabin as the ‘family cabin.’ It consists of a larger floor plan with a shared living space, with 4 beds (two singles and two bunks). A great option for families with kids or larger groups who want to stay in the same cabin together.



Cabins # 10 & 11

These cabins are renovated versions of our original cabins and consist of two twin beds in a shared living space.





GUIDES & GEAR

Our team of professional fishing guides, experienced pilots, and quality equipment are what keeps our guests coming back to fish with us year after year.

Our guide staff is comprised of twelve professional fishing guides, each of which are experienced anglers and excellent instructors. Regardless of your angling experience, our guides are eager to help you accomplish your goals for the week, while also ensuring your safety within the Alaska wilderness at all times.

Our team of experienced Katmai Air pilots and certified mechanics, some of which live on-site at the lodge, are also an integral part of our fishing program at Kulik. Working closely with our head guide and lodge manager, we're able to determine the best places to fish and the best species to target based on timing, weather, and our angler's interests.

We fish both fly and conventional gear at Kulik depending on our guest's preferences. However, it's important to note that some (but not all) of the waters we frequent are restricted to fly fishing only. Interested in learning how to fly fish during your stay? No problem, all of our guides are excellent instructors and well-versed in both fly and conventional methods.



Although we encourage anglers to bring the gear they enjoy fishing most, we're able to outfit our guests with quality fishing gear such as Sage and Redington fly rods, Ross and Redington fly reels, as well as Simms, Redington, and Cabelas brand waders at no additional charge. High quality fishing flies and terminal tackle are also provided to our guests by our guides while on the water.

In addition, a large selection of fishing supplies, clothing, souvenirs, and commonly forgotten items are available for purchase on-site as well.

When not fishing on foot (something of which we do a lot of) we use flat-bottom 16-18 foot Lowe Jon boats equipped with 40-60 horsepower jet drive outboards to access the majority of our waters. Considered the workhorse of Alaska, these versatile "jet boats" allow our guides to navigate a wide range of conditions to keep our angler's fly (or lure) in the right place at the right time.

For our King Salmon program on the Nushagak River, we operate larger twenty two foot Koffler jet sleds capable of fishing up to four anglers at a time and are ideal for the heavy current of the "Nush."

Aside from our motorized vessels, we also utilize a number of inflatable rafts to access several rivers and streams around Bristol Bay where motors are prohibited.

Our air transportation is operated through our own Katmai Air flight service, allowing us to coordinate all of the air travel for our guests traveling to Kulik Lodge from Anchorage on one of our two Pilatus PC-12's, as well as the float plane service for our guided fly outs.

Our float plane fleet consists of six aircraft, including two Cessna single-engine 206's, two De Havilland single-engine Beavers, and two powerful float-equipped De Havilland turbine-engine Otters that give our anglers the opportunity to fish waters that are inaccessible by many other operations in the area.



BRISTOL BAY

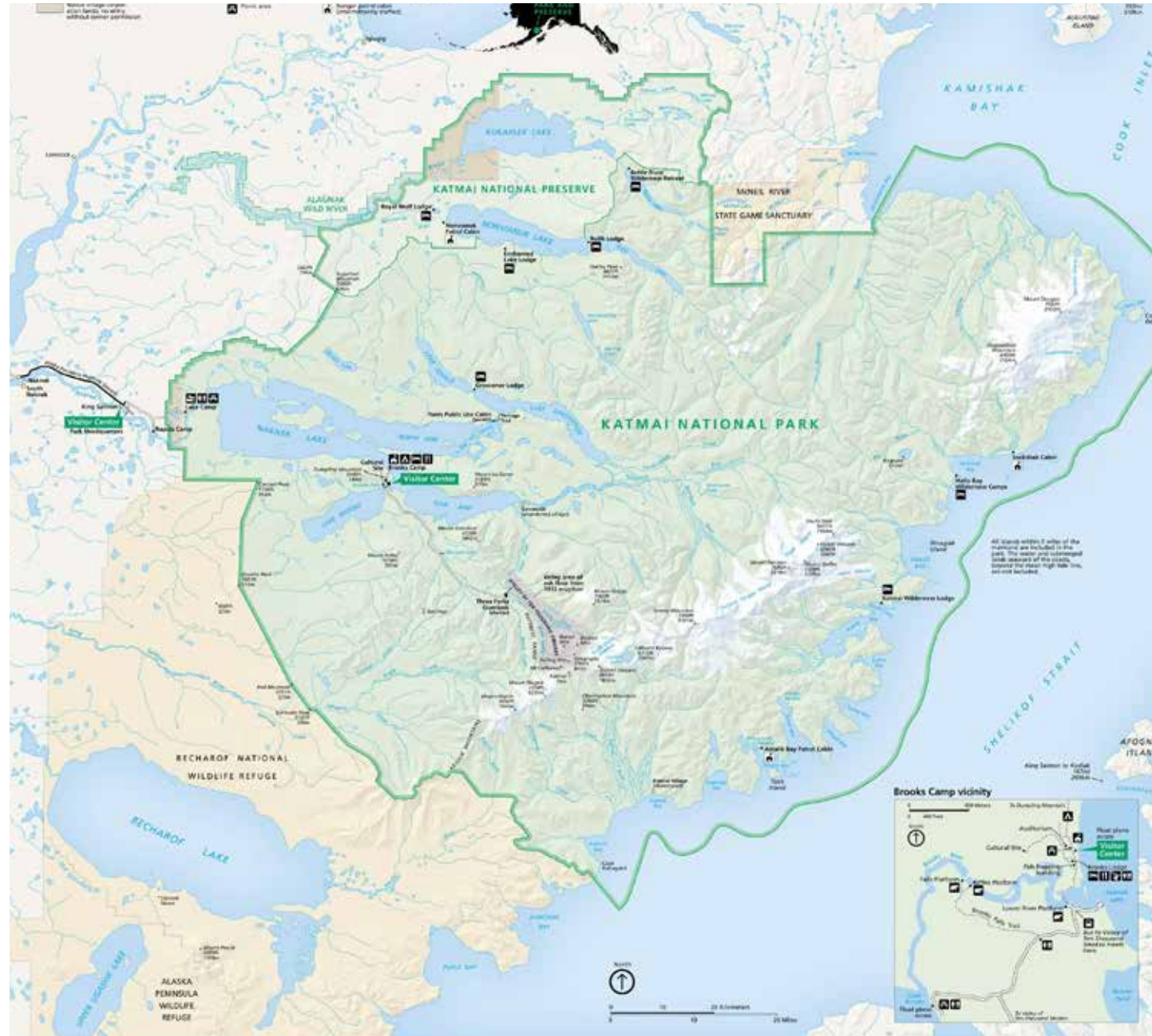
We consider ourselves extremely fortunate to operate within the heart of the Bristol Bay watershed and look forward to sharing its magnificence with others.

Kulik Lodge is located within the Bristol Bay region of Southwest Alaska, a 40 million acre piece of land sandwiched between the Bearing Sea and the Gulf of Alaska. Home to a vast network of pristine rivers and lakes, expansive wetlands and tundra ecosystems, and dense alder and spruce forests, the Bristol Bay watershed harbors nearly 30 native fish species, almost 200 species of birds, and over 40 land-based mammals.

Most well known for its exceptional runs of Pacific salmon, Bristol Bay supports the largest run of sockeye salmon (aka red salmon) in the world, along with prolific runs of King Salmon (aka chinook), chum salmon (aka dog salmon), pink salmon (aka humpy), and silver salmon (aka coho).

Thanks largely to the forage provided by its unparalleled runs of wild salmon, Bristol Bay also houses one of the world's most productive populations of trophy native rainbow trout, along with healthy populations of numerous other game fish including lake trout, arctic char, dolly varden, grayling, and Northern Pike (something we care a bit about).

Also within its bounds are Katmai National Park and portions of Lake Clark national park, recognized as two of the Nation's wildest parks and home to some of the largest populations of protected brown bears on the planet.



KATMAI NATIONAL PARK

Although the majority of the waters we frequent are considered part of the Bristol Bay watershed, Kulik Lodge is also located within the boundaries of Katmai National Park. What's so great about Katmai? Allow us to explain..

On June 6, 1912, the tremendous volcanic eruption of Novarupta created what became later known as the “Valley of 10,000 Smokes.” To protect this unique geologic wonder, Katmai National Monument was established in 1919. Over the years the boundaries expanded, and in 1980 the area was designated a national park and preserve.

In addition to its fascinating geology, Katmai has an abundance of spectacular scenery, unsurpassed sport fishing, and plentiful wildlife. It is the goal of the National Park Service to preserve this truly special place for future generations, and we believe all visitors to Katmai have an obligation to help the Park Service reach this goal.

During your stay at Kulik Lodge, you will be accompanied by trained guides and staff members who are well versed in the rules and regulations associated with operating in Katmai National Park and Preserve, many of which apply to our daily operations in the park. Additionally, we've adopted our own policies at Kulik Lodge to help preserve and maintain the same level of experience for generations to come.

Contact us at Bristol Adventures 1-907-243-5448



FREQUENTLY ASKED QUESTIONS

How long does it take to get to the lodge from Anchorage?

The flight from Anchorage to Kulik Lodge takes approximately 1 hour in our Katmai Air Pilatus PC-12 aircraft.

How many guests are there to each guide?

For most situations at Kulik lodge, we operate on a 2 guests to 1 guide ratio, except for some of the fly out destinations where the number of boats available makes 4 guests to 1 guide necessary. Bear viewing trips are generally done in larger groups.

What are the cabins like at Kulik?

Kulik lodge has 11 guest cabins on-site with varying layouts. We have 7 cabins which can accommodate 2 people each, with 2 twin beds, and a private bath. We also have 3 cabins that feature 2 private bedrooms and a shared living space, as well as 1 larger family cabin with 4 beds and a private bath for parties of 3 or 4 who would like to stay together. Each cabin has heat, electricity, shower and restroom. Daily housekeeping is provided.

Are you strictly a fly fishing only lodge?

No. We can accommodate fly or spin fisherman, although some of the streams that we fish are restricted to fly fishing only. At some of these locations you can still use a spinning rod rigged with a fly or bead. All of our guides are fly fishing instructors so if you would like to learn to fly fish, we can teach you during your stay.

What type of fishing gear is used at the lodges?

Loaner rods and waders are included in your package at Kulik Lodge. Cabelas, Redington and Simms waders, as well as Redington and Sage rods equipped with Ross and Redington reels are available to guests during their stay.

Can we take home the fish we catch?

Due to the short growing season and cold water temperatures in Alaska, resident fish grow and mature slowly. Guests are asked to release all their catch of resident freshwater fish (trout, char, grayling, pike, etc.). A limited amount of salmon may be taken home.

How are fish packaged to take home?

The salmon you keep are filleted, vacuum packed, frozen and packed in fish boxes for you at the lodge. If you have a long distance to travel home, insulated fish boxes and freezer packs are available to purchase at a number of locations in Anchorage.

What is a fly out and where do you fly out to?

A fly out means that you take an airplane to a different river to fish for the day. We fly to many different areas depending on what type of fish you want to catch and where the best spot for that species is at the time you are there.

If we came to see bears, can we also fish on Kulik River?

Yes. Even if you are joining us mainly for bear viewing purposes, but would like to try your hand at fishing during your stay, you may do so. All of our guides are fly fishing instructors so if you would like to learn to fly fish, we can teach you during your stay.

When is the best time to fish at Kulik?

Anytime during our season is a good time to visit Kulik. Each week of our season provides a unique fishing experience with different species available.

F.A.Q. continued

What is the weather like?

The weather in Katmai can be very unpredictable. It can change greatly even in the same day. Temperatures can range between 45 and 70 degrees and even a bit lower in September. Wind and rain are common so you should dress in layers that can be added or removed throughout the day as the weather dictates.

Are there a lot of bugs?

There can be depending on how dry or wet it has been. Some people choose to bring head nets. Most just bring a good insect repellent. We recommend something with a high DEET concentration for maximum effectiveness.

Are cocktails included in the packages?

Complimentary cocktails are served at Kulik Lodge and are included during your stay. Our beverages typically include Alaskan Amber beer on tap, a selection of wines and premium quality liquors. If you prefer higher end wines or liquors, there will be a selection available for purchase.

How does bear viewing at Brooks work for folks staying at Kulik?

Kulik Lodge guests have the opportunity to fly out to our sister operation, Brooks Lodge, to take advantage of the world class bear viewing at Brooks Falls. The flight to Brooks is approximately 25 minutes via float plane from Kulik Lodge. Unlike our guided fishing fly outs, these flights will not be accompanied by a Kulik fishing guide. However, members of our sister lodge, Brooks Lodge, will greet you upon your arrival and usher you to “bear school” where you will receive a brief orientation by the National Park Service. From there it is an approx. 5 minute walk to Brooks River and the first bear viewing platform by the bridge at the lower end of the river. It takes approx. 30 minutes to walk to Brooks Falls, where there are 2 bear viewing platforms on the river. You will have the opportunity to visit each of the 3 platforms during your visit. You will depart Kulik lodge after breakfast at approx. 7:00am and depart back to Kulik at around 4:00pm. During your time at Brooks, members of both Brooks Lodge and the National Park Service will be available to answer any questions you might have.

What is there to do at the Lodge?

On your arrival or departure day, you will have the opportunity to go fishing with a guide, or go on a tour of Kulik River by boat. Guests are also welcome to fish the Kulik River (unguided) in the evenings on foot. You can also take a walk on the tundra, hike over to Kulik Lake to take in the stunning scenery, soak in the hot tub, or relax by the fire with a book or a cocktail.

Can I use felt soled wading boots or wading boots with cleats?

No. The Alaska Board of Fisheries has deemed invasive species a significant threat to Alaska’s aquatic ecosystems. Effective January 1, 2012, felt-soled waders and wading boots will no longer be legal footwear when fishing in Alaska’s fresh waters. Wading boots with cleats are also not allowed at the lodge. Our lodges do have rubber soled wading boots for our lodge guests.

Don’t see the answer to your question? *Contact our trip experts by [clicking right here](#).*

OUR 2023 SEASON

Kulik Lodge will run from June 10th through October 3rd for the 2023 season.

2023 Rates: per person from Anchorage, Alaska.

3 Days / 3 Nights	Arrive Saturday / Depart Tuesday	\$5,995
4 Days / 4 Nights	Arrive Tuesday / Depart Saturday	\$6,995
7 Days / 7 Nights	Arrive Tues. or Sat / Depart Tues. or Sat.	\$8,995

**Single occupancy cabin with shared guide is 150% of above rates.*

Guided Fly-Out Rates

Daily Guided Fly-Out. \$500

- Fly outs are per person per day.
- Two-person minimum.
- Fly outs should be booked on-site at the lodge as there is no credit or refund for prebooked fly outs.
- Day trips to Brooks Lodge for (unguided) bear viewing during the month of July at no extra charge [July 2 – 31 only].

Visit our website for complete [Reservation Policies](#).

Kulik Lodge is a proud member of the Bristol Adventures family of lodges.



BRISTOL ADVENTURES

6400 Airpark Place
Anchorage, AK 99502
Tel: (907) 243-5448
info@bristoladventures.com
www.bristoladventures.com

BROOKS LODGE | GROSVENOR LODGE | **KULIK LODGE** | MISSION LODGE | KATMAI AIR